

Nepal Telecommunications Authority

MIS Report

Magh, 2072 (15 January – 12 February, 2016)

**P.O. Box No. 9754
Kamaladi, Kathmandu
Phone No.: +977-1-4254681
Fax No.: +977-1-4255250
E-mail: ntra@nta.gov.np, info@nta.gov.np
URL: www.nta.gov.np**

**Published on
Chaitra, 2072 (April, 2016)**

1. Telecom Statistics :- Data of Magh, 2072 (15, January 2016)

1.1 Subscription of Voice Telephony Service :-

Services Operators	Fixed		Mobile		Others		Total
	PSTN	WLL	GSM	CDMA	LMS	GMPCS	
NDCL	6,68,390	122,247	1,19,23,098	1,348,400	-	-	14,062,135
UTL	-	50,025	-	-	476,350	-	526375
NCELL	-	-	13,222,996	-	-	-	13,222,996
STM*	**2,832	-	-	-	155	-	2,987
NSTPL	-	2,984	-	-	368684	-	371668
STPL	**598	-	13,62,137	-	-	-	13,62735
Others	-	-	-	-	-	1,742	1,742
Total	671820	175256	26508231	1348400	845189	1742	29550638
	847076		27856631		846931		
Services							Subscription (%)
Fixed							3.20
Mobile							105.14
Others (LMS, GMPCS)							3.20
Total							111.54

Population of Nepal 26,494,504 (Source: cbs.gov.np)

1.2 Data/Internet Services

Services	Subscribers						Total
	NDCL	UTL	Ncell	STPL	STM	ISPs	
Dialup (PSTN+ISDN)	3,728	-	-	-	-	5661	9389
Wireless Modem	-	-	-	-	-	46493	46493
Optical Fibre Ethernet							
Cable Modem	-	-	-	-	-	82962	82962
ADSL	1,62,785	-	-	-	-	-	162785
GPRS,EDGE,WCDMA	68,15,998	-	5,084,088	100,913	-	-	12000999
CDMA 1X, EVDO	136,573	63,097	-	-	-	-	199670
WiMAX	14,504	-	-	-	-	-	14504
VSAT based Internet	-	-	-	-	13	-	13
Total	7133588	63,097	5,084,088	100,913	13	135116	12516815
Internet Penetration (%)							47.24

1.3 Public Call Centres (PCO)

Services	Subscribers
Rural PCO's of STM	1,447
Rural PCO's of STPL	598
Total	2,045

NDCL- Nepal Doorsanchar Company limited

UTL- United Telecom Limited

NCell- Ncell Pvt.Ltd.

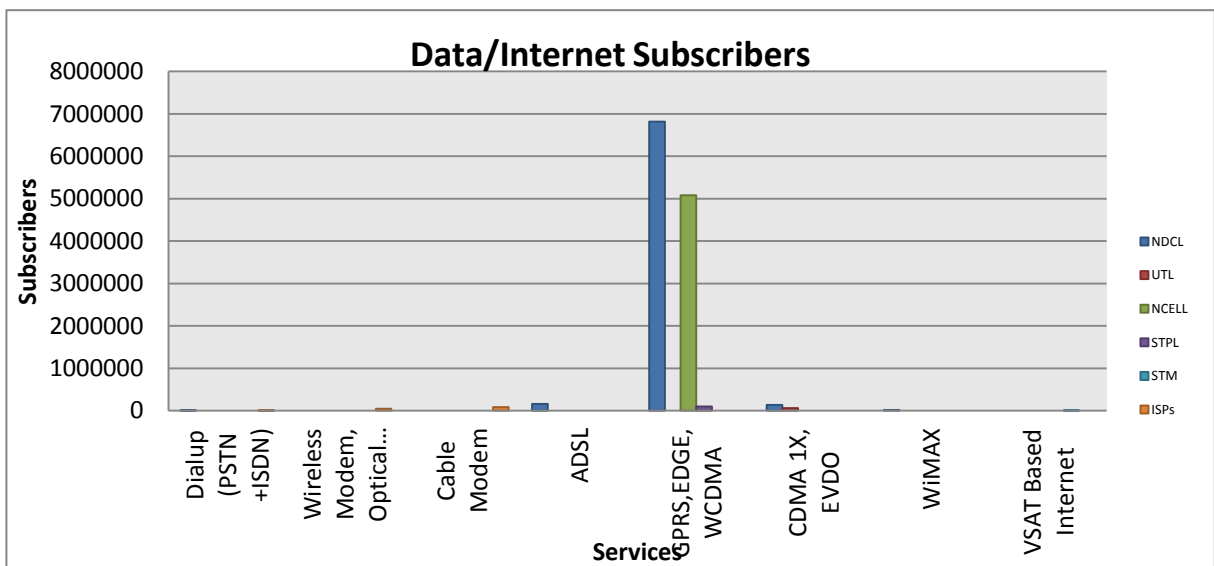
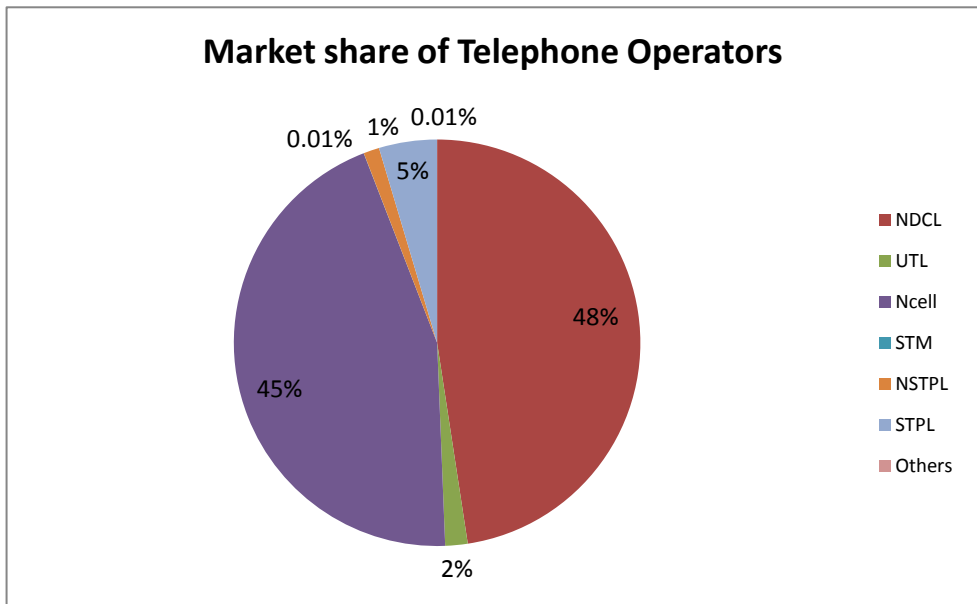
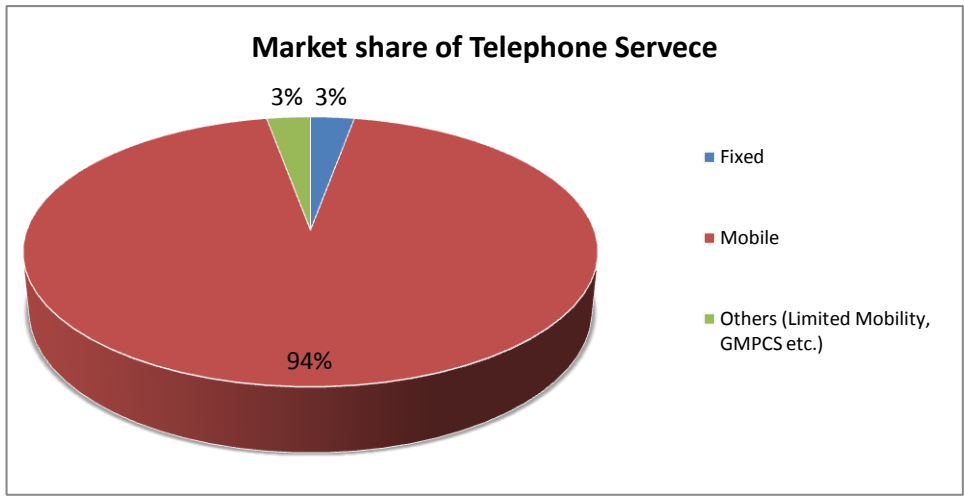
STM- STM Telecom Sanchar Pvt.Ltd

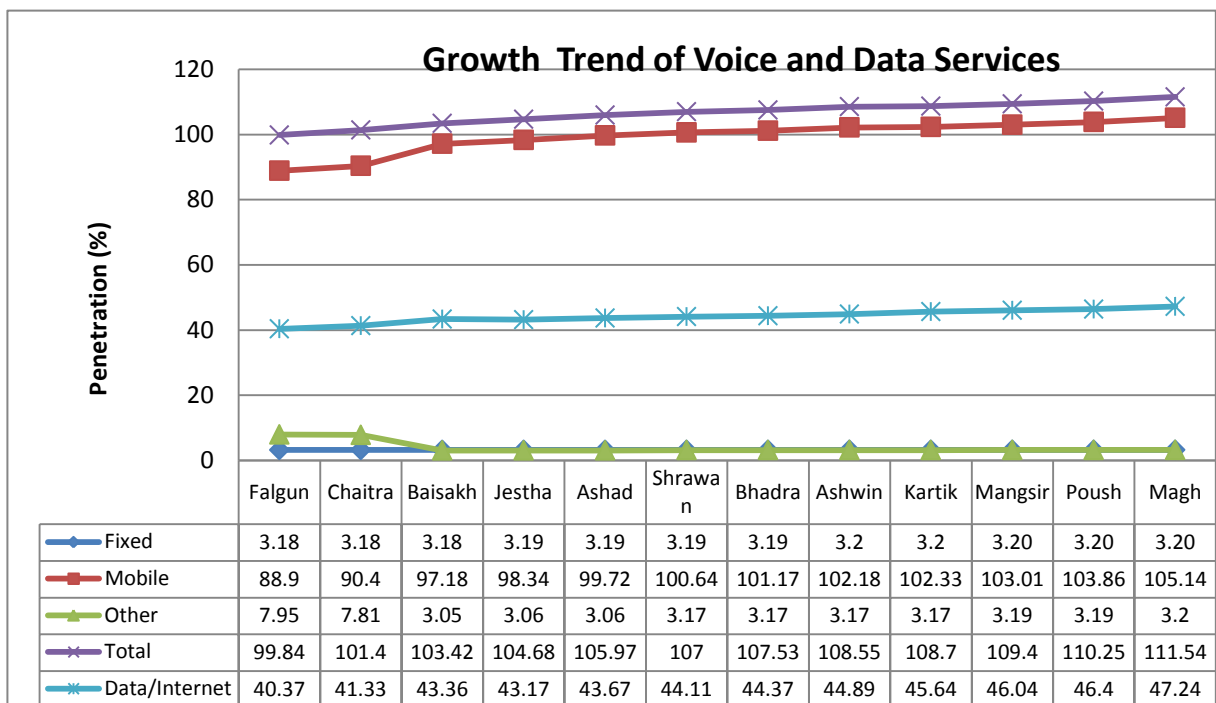
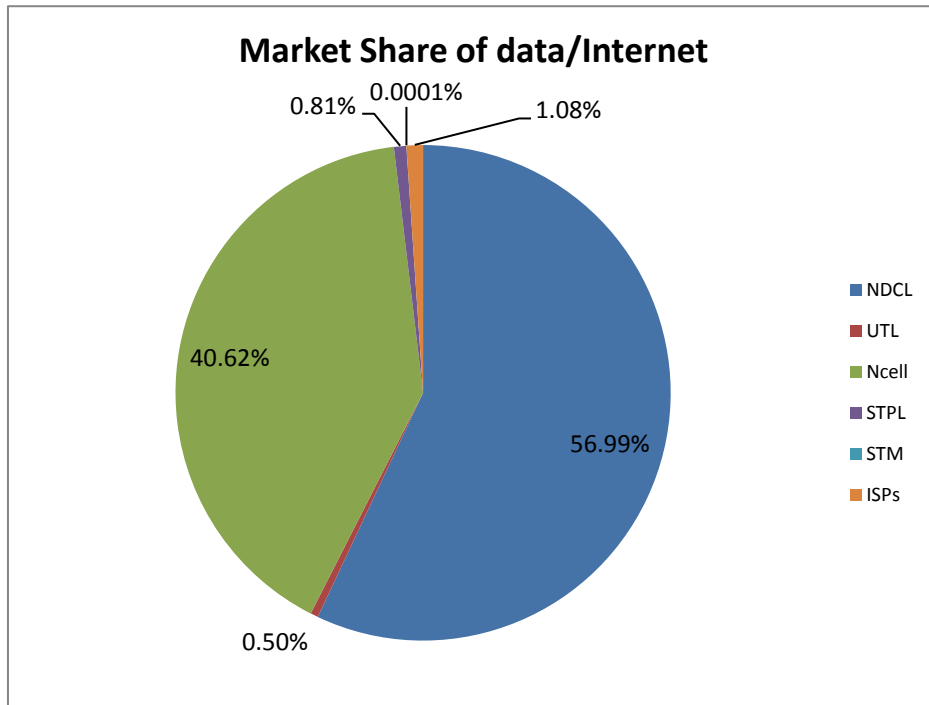
NSTPL- Nepal Satellite Telecom Pvt.Ltd

STPL- Smart Telecom Pvt.Ltd

* Data of the month of magh not received.

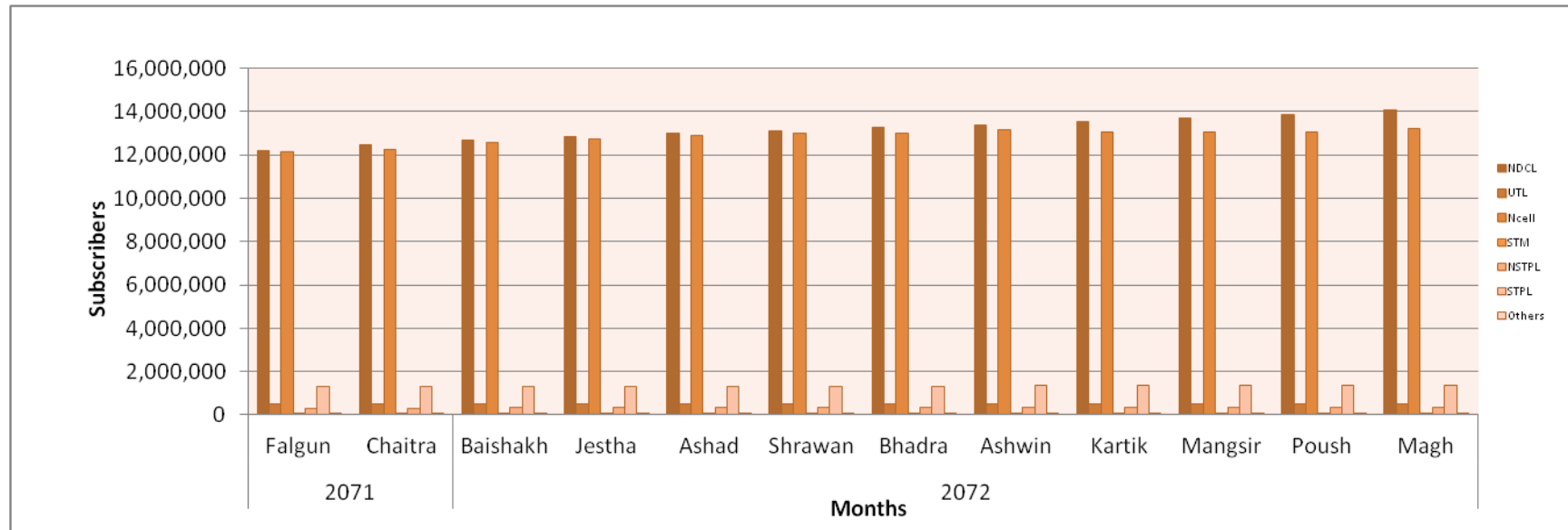
** VSAT based subscribers.





Glimpse of telephone subscribers in one year

S.No.	Operators	2071		2072									
		Falgun	Chaitra	Baishakh	Jestha	Ashad	Shrawan	Bhadra	Ashwin	Kartik	Mangsir	Poush	Magh
1	NDCL	12,183,506	12,467,393	12,680,963	12,826,790	12,981,942	13,121,078	13,244,356	13,353,918	13,514,403	13,684,219	13,870,032	14,062,135
2	UTL	523,850	523,979	524,155	524,467	524,768	524,967	525,157	525,362	525,600	526,078	526,274	526,375
3	Ncell	12,157,355	12,271,945	12,548,356	12,727,071	12,905,513	13,002,882	13,011,625	13,162,446	13,037,875	13,039,492	13,075,450	13,222,996
4	STM	2,987	2,987	2,987	2,987	2,987	2,987	2,987	2,987	2,987	2,987	2,987	2,987
5	NSTPL	286,452	297,911	335,214	337,202	366,463	366,463	366,463	366,463	366,463	370,356	371,148	371,668
6	STPL	1,294,898	1,299,833	1,306,143	1,313,143	1,322,556	1,329,702	1,329,702	1,347,087	1,351,627	1,359,584	1,361,697	1,362,735
7	Others	1,742	1,742	1,742	1,742	1,742	1,742	1,742	1,742	1,742	1,742	1,742	1,742



1.4 License issued as of Magh, 2072 (15, January, 2016)

S.No.	Name of the Services	Number of the licensee
1.	Basic Telecommunications Service	3
2.	Basic Telephone Service	1
3.	GSM Cellular Mobile Service	2
4.	Network Service Provider	10
5.	VSAT Users	26
6.	Internet (With E-mail) Service	43
7.	GMPCS Service	2
8.	Rural Telecom Service	1
9.	Limited Mobility Service	83
10.	International Trunk Telephone Service	3
11.	VSAT Users (Rural Area)	10
12.	Internet (With Email) Service in Rural Area	4
13.	Pre-Paid Calling Card Service	1
	Total	189

* Year wise licensing activity of NTA is shown in Appendix-1

2. NTA Activities

2.1 Type Approval Certificate:

List of type approval certificates issued in the month of Magh, 2072

S. No.	Type of Device	Type of certificate	Number
1.	Short Range Device	Provisional	26
		Periodic permanent	13
2.	GSM Mobile Handset	Provisional	28
		Periodic permanent	1
3.	Tablet	Provisional	1
		Periodic permanent	2
4.	GSM Device	Provisional	1

2.2 Foreign Currency Recommendation: NTA recommended foreign currency equivalent to NRs.54,017,062.33 (Approx.) for the payment of Bandwidth & other Service Charges of different Telecom operators, during the month of Magh, 2072

2.3 Recommendation for import of Telecommunications Equipment : N/A

2.4 Cancellation of License Magh, 2072

1.	Bank of Kathmandu, Kamalpokhari, Kathmandu (Birehdra Nagar Surkhet, Butwal, Kohalpur, Ghorahi)	VSAT User
2.	Nepal SBI Bank Ltd.,(Biratnagar, pokhara)	
3.	Korea Hydro and Nuclear power Co. Pvt.ltd., Hattisar, Kathmandu	Rural VSAT User

2.6 Human Resource and Capacity Building:

a) **International Training, Seminar, Study and Observation Tours/Visit: N/A**

b) **National Training, Seminar, Study and Observation Tours/Visit: N/A**

2. NTA's Major Decisions during the month of Magh, 2072: N/A

4. List of the members of Nepal Telecommunications Authority

S.No.	Members Name	Designation	Date of Appointment
1	Mr. Digambar Jha	Chairman	2069/08/19
2.	Mr. Mahesh Prasad Adhikari	Member	2068/11/04
3.	Mr. Anil Kumar Dhungel	Member	2068/11/04
4.	Mr. Dhan Raj Gnyawali	Member	2069/08/19
5.	Mr. Tika Prasad Upreti	Member	2071/07/27

For Details Contact:

Consumer and Economic Analysis Section

Nepal Telecommunications Authority

Kamaladi, Kathmandu

Phone No.: +977-1-4254681 (Ext. 243, 244)

Fax No.: +977-1-4255250

E-mail: info@nta.gov.np, ntra@nta.gov.np

Licensing Activity as of 16 July 2015 (End of Ashad, 2072)

S. No.	Services	Fiscal Year															Total no. of License	License Cancelled	Existing no. of License
		056/57	057/58	058/59	059/60	060/61	061/62	062/63	063/64	064/65	065/66	066/67	067/68	068/69	069/70	070/71			
1	Basic Telecommunication	0	1	0	1	0	0	0	0	1	0	0	0	0	0	0	3	0	3
2	Basic Telephone Service	0	0	0	0	0	0	0	0	0	0	0	0	0	1	0	1	0	1
3	GSM Mobile	1	0	0	0	0	1	0	0	0	0	0	0	0	0	0	2	0	2
4	Network Service Provider	6	1	3	0	1	0	0	2	1	0	1	0	0	0	2	18	8	10
5	Pre-Paid Calling Card	0	0	0	0	0	0	0	0	0	0	0	0	0	1	0	1	0	1
6	VSAT User	16	8	11	15	20	6	41	7	0	6	22	0	5	0	0	157	131	26
7	Internet (with e-mail)	13	2	3	2	6	6	7	3	3	7	12	5	1	0	5	78	35	43
8	Radio Paging	6	2	0	0	0	0	0	0	0	0	0	0	0	0	0	8	8	0
9	Fax Mail	4	2	0	0	0	0	0	0	0	0	0	0	0	0	0	6	6	0
10	Video Conferencing	1	0	0	0	0	0	0	0	0	0	0	0	0	0	0	1	1	0
11	GMPCS	0	0	0	2	0	0	0	1	0	0	0	0	0	0	0	3	1	2
12	Rural Telecom	0	0	0	0	1	0	0	0	1	0	0	0	0	0	0	2	1	1
13	Limited Mobility	0	0	0	0	0	0	2	4	4	3	35	61	0	0	0	109	26	83
14	Int. Trunk Telephone	0	0	0	0	0	0	0	0	2	0	0	1	1	0	0	4	1	3
15	Rural VSAT User	0	0	0	0	0	0	0	0	1	2	5	3	5	0	0	17	7	10
16	Rural ISP	0	0	0	0	0	0	0	0	0	1	5	0	0	0	2	9	5	4
Total		47	16	17	20	28	13	50	17	13	19	80	70	12	2	9	419	230	189

Internet Subscriber's of Service as of Magh , 2072

S.No.	Company Name	Dialup	Wireless	Cable	Fiber	Total
1	Mercantile Communication (Pvt). Ltd. DurbarMarg, Kathmandu	2952	809	800		4561
2	WorldLink Communications (Pvt.) Ltd. Jawalakhel, Lalitpur*	1187	3218	15,146	3450	23001
3	Himalayan Online Services (Pvt) Ltd. DurbarMarg, Kathmandu*	-	266	653		919
4	Vianet communicatuins Pvt. Ltd., Sidhibhawan, Kathmandu*	-	-	-	6,800	6,800
5	Web Surfer Nepal Company. System Pvt. Ltd. Naxal, Kathmandu*	-	11423	472	1053	12,948
6	Subisu Cablenet Pvt.Ltd. Baluwatar, Kathmandu	-	8495	31402	647	40544
7	Japan Nepal Information Communication Technology, Kalikasthan*	152	-	-		152
8	Health Net Nepal, Jayabageswori, Kathmandu*	-	-	24		24
9	Broadlink Network & Communication Pvt.Ltd., Kathmandu*	-	3,605	17,976		21,581
10	Radius Communication Pvt.Ltd., Putalisadak, Kathmandu*	-	-	136		136
11	Sustainable Network Pvt.Ltd. Pulchok, Lalitpur	-	94	2	2	97
12	Nepal Net Sanchar, Biratnagar *	-	60	15		75
13	Allied Net Link Technologies Pvt. Ltd., Marajgunj, Kathmandu*	-	62	-		62
14	OTEL communication Pvt. Ltd., Jawalakhel, Lalitpur*	-	-	752		752
15	Eastern Networks Pvt. Ltd., Naxal, Kathmandu*	-	-	206		206
16	Net Max Technologies P. Ltd, Anamnagar, Kathmandu*	-	2318	75	271	2664
17	Fiber Online Pvt. Ltd., Jawalakhel, Lalitpur*	-	-	474		474
18	Pokhara Internet Pvt. Ltd., Pokhara, Kaski*	-	-	15		15
19	Cherry World Communication P.Ltd., New Baneshwor, Kathmandu*	-	162	18		180
20	Classic Tech Pvt. Ltd., Baneshwor, Kathmandu*	-	5,758	1,921		7,679
21	Mega Broadcast Pvt. Ltd. Dillibazar, Kathmandu*	1,370	-	-		1,370
22	Eastlink Technology Pvt. Ltd., Tripureshwor, Kathmandu*	-	211	-		211
23	Lumbini Net Pvt.Ltd, kathmandu*	-	10,012	652		10,664
	Total	5661	46493	70739	12223	135116

* Those ISP who did not submit the data for the month of Magh.